



## EURO-MLS

BIGBANG® EURO MEN'S LONG SLEEVE TWILL SHIRT

### FEATURES:

- Classic fit
- Button down collar
- Reinforced buttons
- Double stitching
- Two buttons adjustable barrel cuffs
- Rear side pleats
- Left-chest patch pocket with a pen slot

### FABRIC:

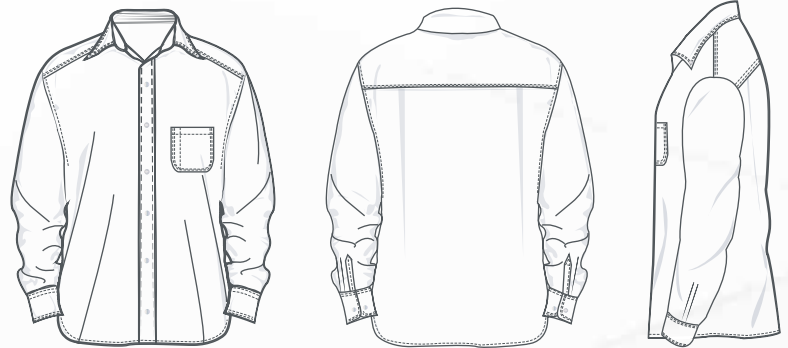
- Twill
- 5.50 oz/yd<sup>2</sup> (186.48g/m<sup>2</sup>)
- 60% cotton 40% polyester
- Wrinkle-resistant performance

### SIZES:

- 2XS - 4XL

### CARE INSTRUCTIONS:

- Machine wash cold with like colors
- Tumble dry low. Remove promptly and hang
- Warm iron if needed
- Non-chlorine bleach if needed



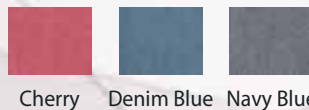
PRODUCT DETAILS

### SIZE CHART

	2XS	XS	S	M	L	XL	2XL	3XL	4XL
Chest	32-34	35-36	37-38	39-42	43-44	45-46	47-49	50-53	54-57

### PRODUCT SPECIFICATION

	2XS	XS	S	M	L	XL	2XL	3XL	4XL
Body width	20	21	22	24	25	26	27.5	29.5	31.5
Full Body Length	30	30.25	30.5	31	31.25	31.75	32	32.75	33.75
Hip	20	21	22	23	24	25	26.5	28.5	30.5
Neck Circumference	15.75	16.25	16.75	17.25	17.75	18.25	19.5	20	21
Sleeve Length	33	33.5	34	34.5	35	35.75	37	37.75	38.25



Cherry Denim Blue Navy Blue

### DISCLAIMER

- All length measurements are in inches.
- The product colors should be used as guides.
- BIGBANG® Corporate Apparel reserves the right to modify the information expressed in this document at any time without any prior notice.