



MAUI-MLS

BIGBANG® MAUI MEN'S LONG SLEEVE POPLIN SHIRT

FEATURES:

- Classic fit
- Button down collar
- Reinforced buttons
- Double stitching
- Two buttons adjustable barrel cuffs
- Rear side pleats
- Left-chest patch pocket with a pen slot

FABRIC:

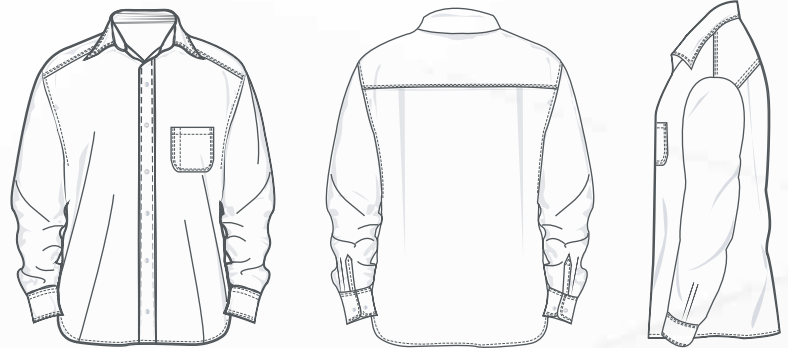
- Poplin
- 3.75 oz/yd² (127.15g/m²)
- 60% cotton 40% polyester
- Light-weight

SIZES:

- 2XS - 4XL

CARE INSTRUCTIONS:

- Machine wash cold with like colors
- Tumble dry low. Remove promptly and hang
- Warm iron if needed
- Non-chlorine bleach if needed



PRODUCT DETAILS

SIZE CHART

| | 2XS | XS | S | M | L | XL | 2XL | 3XL | 4XL |
|-------|-------|-------|-------|-------|-------|-------|-------|-------|-------|
| Chest | 32-34 | 35-36 | 37-38 | 39-42 | 43-44 | 45-46 | 47-49 | 50-53 | 54-57 |

PRODUCT SPECIFICATION

| | 2XS | XS | S | M | L | XL | 2XL | 3XL | 4XL |
|--------------------|-------|-------|-------|-------|-------|-------|------|-------|-------|
| Body width | 20 | 21 | 22 | 24 | 25 | 26 | 27.5 | 29.5 | 31.5 |
| Full Body Length | 30 | 30.25 | 30.5 | 31 | 31.25 | 31.75 | 32 | 32.75 | 33.75 |
| Hip | 20 | 21 | 22 | 23 | 24 | 25 | 26.5 | 28.5 | 30.5 |
| Neck Circumference | 15.75 | 16.25 | 16.75 | 17.25 | 17.75 | 18.25 | 19.5 | 20 | 21 |
| Sleeve Length | 33 | 33.5 | 34 | 34.5 | 35 | 35.75 | 37 | 37.75 | 38.25 |



Gray



Plumbago Blue

DISCLAIMER

- All length measurements are in inches.
- The product colors should be used as guides.
- BIGBANG® Corporate Apparel reserves the right to modify the information expressed in this document at any time without any prior notice.