



SUPER POP-MSS

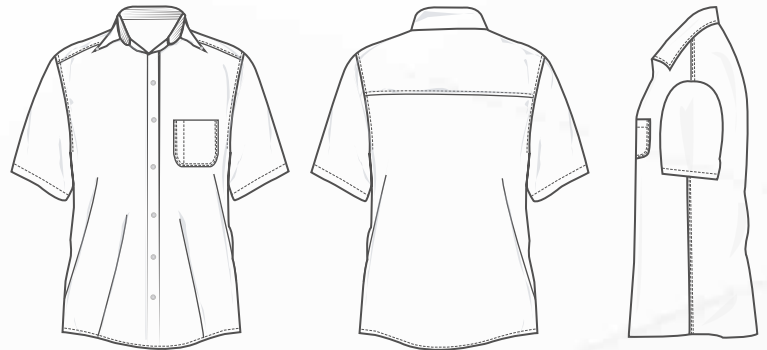
BIGBANG® SUPER POP MEN'S SHORT SLEEVE TWILL SHIRT

FEATURES:

- Classic fit
- Button down collar
- Reinforced buttons
- Double stitching
- Hemmed sleeves
- Rear side pleats
- Left-chest patch pocket with a pen slot

FABRIC:

- Twill
- 5.60 oz/yd² (189.87g/m²)
- 60% cotton 40% polyester
- Wrinkle-resistant performance



CARE INSTRUCTIONS:

- Machine wash cold with like colors
- Tumble dry low. Remove promptly and hang
- Warm iron if needed
- Non-chlorine bleach if needed

SIZE CHART

	XS	S	M	L	XL	2XL	3XL	4XL
Chest	35-36	37-38	39-41	42-43	44-46	47-49	50-53	54-57

PRODUCT SPECIFICATION

	XS	S	M	L	XL	2XL	3XL	4XL
Body width	21	22	23.5	24.5	26	27.5	29.5	31.5
Full Body Length	30.5	31	31.5	32.5	33.5	34.5	35	35.25
Neck Circumference	16.25	16.75	17.25	17.75	18.25	19.5	20	21
Sleeve Length	19.25	19.5	19.75	20	20.5	21.5	22	22.25



Black French Blue Red White

DISCLAIMER

- All length measurements are in inches.
- The product colors should be used as guides.
- BIGBANG® Corporate Apparel reserves the right to modify the information expressed in this document at any time without any prior notice.